

A CME-Concept "Patient Safety" as base for implementing Patient Safety



Authors: Weidringer JW, Rohe J, Fischer G, Hoffinger G, Barth S, Thomeczek C

German Agency for Quality in Medicine (ÄZQ)
 Joint Institution of the
 German Medical Association (GMA) and the
 National Association of
 Statutory Health Insurance Physicians (NASHIP)

Working Group CME of the Expert Panel on Patient Safety
 German Agency for Quality in Medicine (äzq), Berlin, Germany,
 Joint Institution of the German Medical Association (GMA) and the
 National Association of Statutory Health Insurance Physicians (NASHIP)

Wegelystrasse 3, 10623 Berlin Germany
 Phone +49 30 4005 2500
 Fax +49 30 4005 2555
 mail@azq.de, www.azq.de

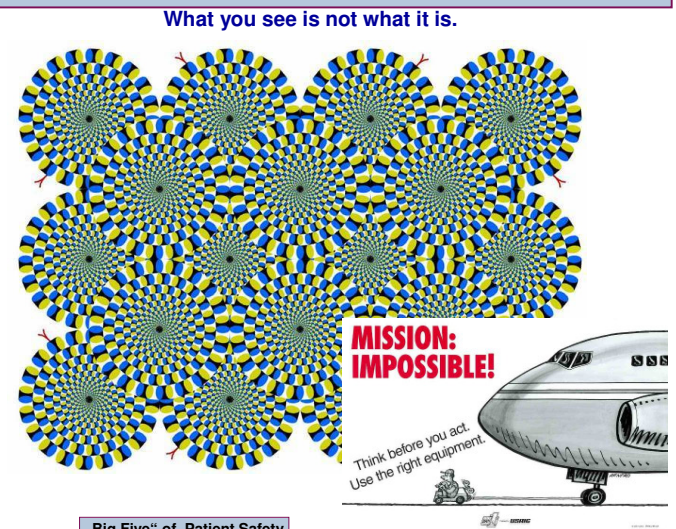
Introduction

Great uncertainty among public health professionals concerning the subject "patient safety" exists.
 Possible reasons:

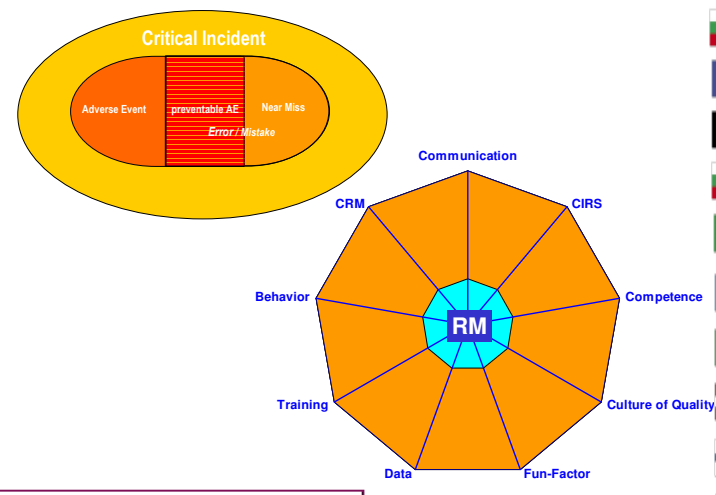
- ignorance
- fear of getting involved
- questions of legal responsibility
- adverse publicity about (medical) errors in the press

Goals of CME-concept:

- to create a willingness to examine and discuss error-proneness that may endanger patient safety in complex health care systems
- to learn how to apply and communicate corrective strategies, in order
- to detect possible sources of error early and
- to work towards their elimination



„Big Five“ of Patient Safety



Methods

The CME-concept aims at:

- interested professionals
- laypersons
- other people active in the realm of public health

Topics of the CME-concept:

- Basic knowledge (facts, politics etc.)
- Error research / Psychology of Safety
- Communication / Teamwork
- Instruments / Implementation / Training

Seminars can be freely adjusted, as long as

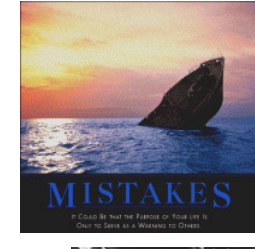
- they follow the qualification steps I-III
- cover the defined topics, contents and learning goals of their respective qualification step/level
- define the framework for the appropriate procedure of the seminars
- appropriately acknowledge the methodological recommendations of the CME-concept

Discussion

The CME-concept "Patient Safety" serves as a guideline for the education, training and continuing medical education in the field of patient safety in the practical and clinical realm.

The CME-concept will be published by the German Medical Association and the National Association of Statutory Health Insurance Physicians. It will be a part of the CME for German physicians.

The authors invite other medical professions to appraise the content of this curriculum critically and to communicate candidly any comments or suggestions as well as adjust subjects and content to the needs and experience of their own professional groups.



CME-Concept
 "Patient Safety"

Identify errors
 Avoid incidents
 Correct consequences

- Learning from Errors -



www.azq.de - www.versorgungsleitlinien.de - www.forum-patientensicherheit.de - www.cirsmedical.de

